



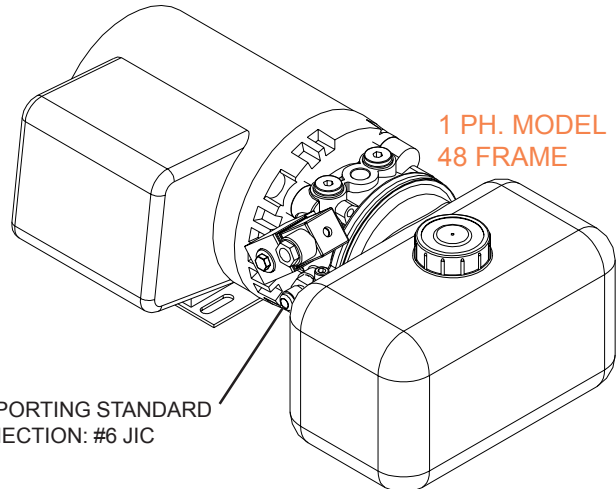
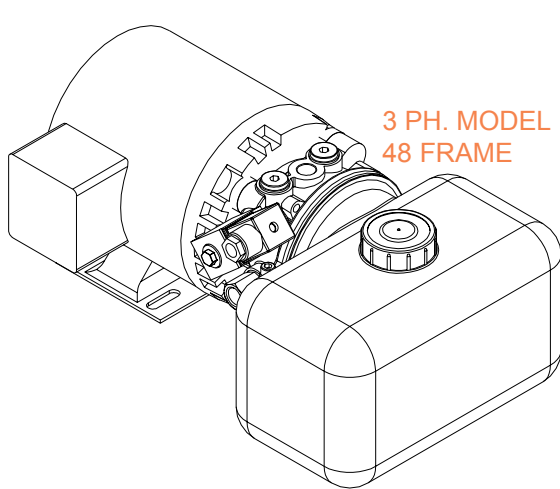
**Hydroperfect Intl. Inc.**  
 71 Delta Park Blvd. Unit 1  
 Brampton, ON L6T5E7  
 Tel: (905) 791-3388 Fax: (905) 791-7322  
 www.hpicanada.com / www.hpi.tm.fr

The **M-Series** unit has been engineered to endure the rigors of the material handling industry. A high efficiency pump and motor design allows this unit to operate at **only 10.1 amps at 115V** with a 1HP load. The motor is also capable of providing additional torque to deliver performance above and beyond that point.

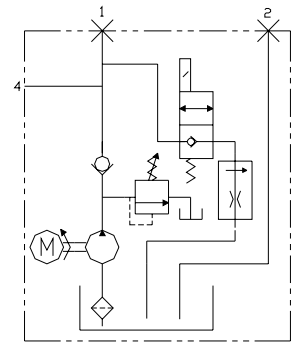
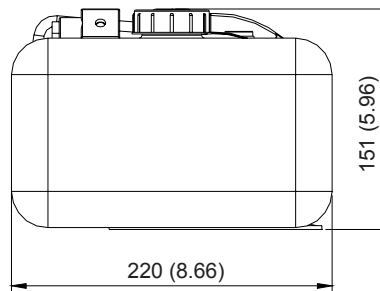
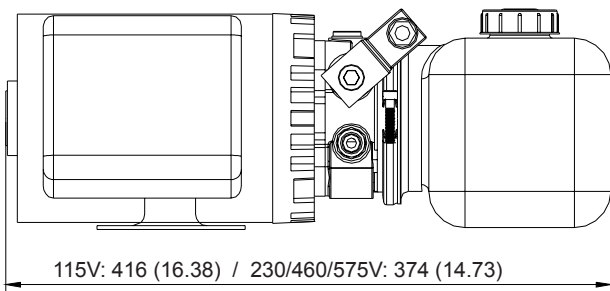
Four standard design configurations are available providing flows of 0.44 to 1.12 GPM upto a maximum pressure of 4060 psi. The reservoir has a useable volume of **0.72 Gallons** and is configured for single acting applications. This unit is also fully compatible with all other Micro 3G valves and accessories.

# 3G

## LOW PROFILE M - SERIES



SIDE PORTING STANDARD  
CONNECTION: #6 JIC



HYDRAULIC SCHEMATIC

### CODIFICATION

**M 75 F 4 M 1 3000** — RELIEF PRESSURE (PSI)

#### PUMP CAPACITY

0.44 GPM **50**  
 0.67 GPM **75**  
 0.89 GPM **10**  
 1.12 GPM **12**

#### MOTOR

NO MOTOR **0**  
 1.00 HP **F**

#### VOLTAGE

**X** NO MOTOR  
**4** 115V 3450 RPM  
**6** 230/460V 3450 RPM  
**8** 575V 3450 RPM

#### MOTOR TYPE

**M** 48 FR. MOTOR

#### VALVES

**4** 24VDC  
**5** 24VRAC  
**1** 115VRAC  
**3** 230VRAC